

THE BULLETIN

תסז
BSD

*of Beth Sholom Congregation
Frederick, Maryland*

June 2007

Volume XII, Issue 12

Sivan/Tammuz 5767

MIXTURE OF EMOTIONS

The rabbis were kind when they composed the blessings to praise G-d. All the blessings begin with the same formula. "Bless you G-d, our G-d, King of the world." As it says in *Fiddler on the Roof*, there is a blessing for everything: for ups and for downs.

Hashem was kind when he arranged events and seasons. The events are not all peaks and not all valleys. ✧

PEAKS AND VALLEYS

Passover was a peak. We were referred to as the "redeemed" ones. We "rue-detzkiend" for 49 days to that place, Sinai. There we received the Torah. For the "march" and the encampment each family-tribe had its own banner. Each tribe's flag had a picture and color that depicted a characteristic or event which occurred in the life of the tribe.

The Israelites camped in groups of threes around the Priests and Levites. Each group of threes had its own Degel (flag), besides the flag of each tribe.

The groups of threes were stationed around the Levites and the Priests who were stationed around the Tabernacle in protective mode (see the diagram on p. 2). The Tabernacle was the place where G-d's most powerful presence existed – in the Holy of Holies. Thus the camp triumphantly marched toward Sinai. Its flags and banners were held high. The Israelites marched to attend to its new Master; to receive His instruction through the Torah.

There was to be a change of masters. Pharaoh's purpose for his slaves was to destroy them. He sought to destroy their physical and spiritual lives. Hashem, the new Master, seeks to establish the spiritual and physical lives of his newly acquired people. The "how-to book" is the Torah. ✧



Symbols of the twelve tribes of Israel

The President's Corner

by Andy Carpel/acarpel@aol.com

Shalom everyone. Shavuot is now over and we can stop counting the Omer. I noticed that there is a page display device on the left wall of the sanctuary. At first I thought it was some sort of Omer counter. As it turns out, it is for telling you what page we're on during the services. No more pesky neighbors lording pages numbers over you. Just look on the left hand wall. I refer to it a lot.

We had our Congregational meeting in May. In addition to our twenty-odd Board of Trustees members, there may have been between 40 and 50 members in attendance. If you are interested in a copy of the minutes, just email Pauline. I think the most telling notes taken by Cindy Diamondstone at the big meeting were under the heading of New Business. These are her notes...

"New Business: There was an expression of concern re: our numbers going down. It was noted that this is a trend. Active memberships in many organizations are decreasing, including both the Reform and Conservative movements. It was also noted that many families were not happy that our Hebrew School was 2 days a week in addition to Sunday. That did cause a hardship for many families. We need to promote ourselves more. We need to publicize the Alternative Services. The Long Range Planning Committee (LRP) is looking into these issues. A sub-committee of the LRP has been meeting with a representative from the Conservative movement to discuss affiliation. As was expressed earlier, decreasing membership is a concern of many congregations. Question: Has any thought been given to selling a property to help pay down the mortgage? There was much discussion re: this topic."

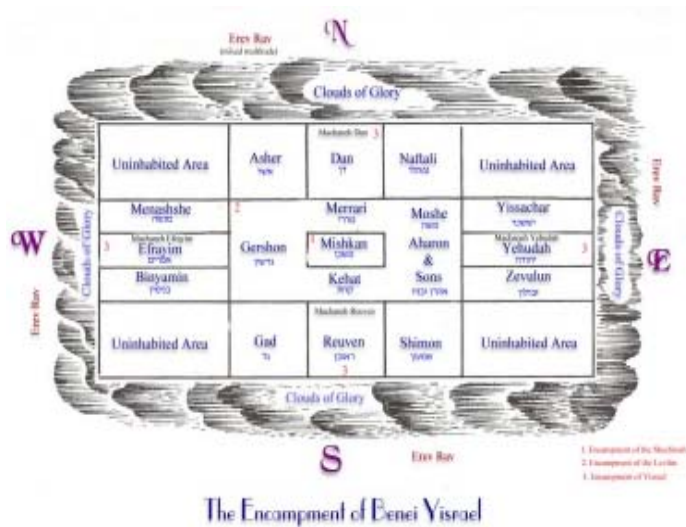
(Continued on page 4)

FLAG OR BANNER

What is the purpose of marching with a flag? The flag states “why” I am lifting my footsteps and moving forward. The banner states why I am here and where I am going – a mission statement, a mission flag.

My grandson sits behind me in the study hall. I asked him whether or not the camps of the Priests and the Levites had a banner. We both agreed that we never read that the Priests and Levites had a banner.

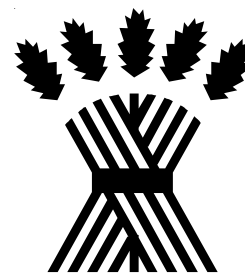
I suggested that there is no need for a banner when the encampment is around the Tabernacle. The Tabernacle is the mission statement. My grandson felt that the banner and flag are unifying tools. ☆



THE MARCH TO SINAI

Sinai would be a peak peak experience. Therefore, we counted the days until we reached Sinai. We counted 49 days until the Torah experience. The 49-day count was a peak experience.

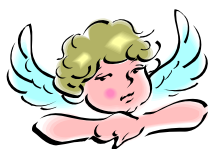
During the march, the Children of Israel worked on their spiritual levels. Each of the seven weeks, a different characteristic was worked on. When the Israelites had reached a spiritual level within range of what the Torah would require, they were ready. Passover and redemption were peak; receiving the Torah was more so. In fact, the purpose of the Exodus was to bring the Israelites to Sinai and the treaty with G-d. ☆



MOURNING DURING THE OMER COUNT

Fourteen hundred years later, an emotional valley occurs. This makes its mark on our calendar. Rabbi Akiva’s students die for 33 days of the 49-day Omer count. It was a plague. On the 33rd day of the Omer count, the dying ceased. Therefore, on the 33rd day of the Omer, mourning rules abated.

Carol and I had an engagement ceremony on the 33rd day of the Omer in Pittsburgh. During the 33 days of the Omer-count, rabbis do not officiate at weddings. The joyous Omer count, since the 2nd century, has become a mourning period. ☆



Bulletin Angels

Alice Lazarus Haber
for the Yahrzeit of her
beloved mother, Rose Lazarus

Steve & Ronni Nassof

What is a Bulletin Angel? YOU are, when you give a gift to Beth Sholom of \$36 per issue to help defray the costs of publishing Beth Sholom’s Bulletin. Angels’ names are published in each issue. Send your check, earmarked for Bulletin Angels, to the Community Center. ☆

EMOTIONAL UPS AND DOWNS

Passover; joy-peak; Omer; joy-peak colored by the mourning period; and then Shavuot time; joy-peak.

Shavuot is a favorite time for me. Of course, I never met a time that wasn’t. Tuesday night, the 22nd of May was the 50th night. It is Erev, the eve of Shavuot.

The formula of wine, candles and Challa takes place. The tradition is to eat dairy foods, since at Sinai the laws of Kosher slaughtering had not yet been taught. Dairy food and flowers are the accoutrements for Shavuot. Some sages feel that meat should be served since the joy of the holiday is assisted with a menu of meat. I heard a lecture which advocated vegetarianism. All life is precious. Even stomping on grass is not allowed. However, Shabbos and Yomtov dictates that we eat meat to increase joy. ☆

The President's Corner (Cont.)

Decreasing membership is a big concern. It doesn't matter whether it's a national trend or not. Beth Sholom must abide. It is the responsibility of our BOT to implement plans to increase membership and keep Beth Sholom vital. We are working toward that elusive goal. After having all those Coffee Klatch meetings and now the Long Range Planning Committee meetings, we are looking at every idea with an eye toward increased membership. Andy Rosenfeld has altered the emphasis of his Fund Raising Committee to that of social activities. Couples such as the Kelseys pay a house call to all new members. The Board of Ed has lightened the burden on parents by eliminating one weekday session per week of Hebrew school. We're planning parties, offering membership deals, even planting flowers, etc. We have tried many things to increase the numbers and we plan to do more. Rabbi talks of how G-d can change things in the blink of an eye. I sure wish he'd blink in our direction.

When I was a kid there was a commercial on TV the ended with the line, "What's a mother to do?" For sixty seconds there was chaos and demands made on this poor TV Mom, until she gapes into the camera and utters her. ...prayer. I feel like that woman. "What's a shul president to do?" We need divine guidance. After all, we are Beth Sholom, a house of worship. I have faith that Jews moving to Frederick will discover us; that distracted members will re-discover us. It's my prayer that all, some, or just one of our big plans will yield surprisingly big results. But until then, Lord, show us a sign. Amen. ✧

Beth Sholom Congregation

1011 N. Market Street • Frederick, MD 21701
301-663-3437 • 301-663-8154 (fax)
bethsholomfrederick@yahoo.com
www.bethsholomfrederick.org

Morris Kosman, Rabbi / mkosman@aol.com

Andy Carpel, President / acarpel@aol.com

Pauline Horn, Executive Director / phshulbiz@yahoo.com

Janet Potash, Administrative Assistant
Bulletin Editor
bethsholomfrederick@yahoo.com

Marion Wolberg Weiss cordially invites the congregation to attend Shabbos luncheon on Saturday, June 2, to commemorate Rebecca Wolberg's Yahrzeit.

*The unveiling will be held on Sunday, June 3.
Call Marion at 631-324-4914 for details.*

JUNE SPECIAL BIRTHDAYS and ANNIVERSARIES



**Marshall Botkin
Steve Chado
Paula Cornish
Susan Newman
Joan Pearlman
Michal Rouse**



Rick & Leslie Moore

THE WRITERS' GROUP

The Writer's Group meets on the third Wednesday in June at 7:30 p.m. at the Community Center. Contact Don Lachman for more information. I'm still behind in reading Don Lachman's stories, but I will get to it.

It's amazing the literary output that our group generates.

John Updike, in high school, handed his teacher his assignment. She read it. Then she said, from now on, you're to sit in the back of the room, forget any assignments, and just write.

John Updike lives in the East in a small town. He rented the room upstairs from a store on the main street. That is where he does his writing today. ✧

OUR ENVOYS

We have congregants who, during their vacation time, like to visit areas they have never been to. Their goal is to visit Jewish communities and their synagogues. They do not have an official position in our Shul....yet.

They have been to places like Wisconsin and Oregon. In Oregon they had dinner at the Rabbi's home on Shabbos. They saw a rack in the Shul, like a short towel rack which held the page numbers. Therefore we now have such a rack for some deaf congregants.

My facts may not be exactly correct but it's something like I've written. The rack is on the left side of our sanctuary. The point of my story is not the rack or the facts. There is a point.

I appreciate the reality that our congregants can attend any service and participate.

I appreciate having congregants whose Shul experience is expansive.

Returning to our service their view is a new one, very different than before they left.

We have congregants who visited a large synagogue in Rome, Italy. The prayer book was in Italian and Hebrew. They could follow the Hebrew. They knew the place in the prayer book because of Frederick experience. ☆

Memory Lane

Prayer book in memory of Ida Chertoff by the Chertoff family.

January 1990

Prayer book. Compliments of Rita and Paul Gordon. June 1988

Prayer book in memory of Robert F. Kopelman by his brother

Charles. June 15, 1995

Prayer book in memory of Rose Shapiro by her family. 1995

Prayer book in honor of Sylvia Weinberg's 90th birthday by

Dan and Ida Ruck. February 2001

Prayer book in memory of beloved grandparents Sarah and

Samuel Gorelick by Janet Potash. March 2001

Beth Sholom Congregation welcomes
new members

Warren & Laura Better

MARCO POLO AND BENYOMIN OF TUDELO

Marco Polo (out of the pool) was a world traveler. He lived in the 12th century. He visited places in the world to become educated and experienced.

Benyomin of Tudelo did the same as Marco Polo. The two did not know of each other.

Our congregants, the envoy travelers, are closer in purpose to Benyomin of Tudelo than to Marco Polo.

Benyomin of Tudelo traveled extensively in the 12th century. His purpose was to visit Jewish communities.

A rabbi who wrote commentary from the 11th century through the 15th century is referred to as a Reeshon. Binyomin of Tudelo was a Reeshon. In a commentary, a "by the way" item, Benyomin wrote that he had visited Ethiopia. There he met Jews.

He asked: "Where do you come from?" They replied that they were from the tribe of Dan. We have it in our tradition that when Israel was two states, we lived in the north of Israel under the state of Israel. This was during the time of Yerovem Ben Navat.

It looked like we would be at war with our brothers in Judah. We could not refuse to go to war and we could not agree to go to war. Therefore, we boarded our ships and proceeded down the Mediterranean to the tip of Africa. From there we settled in Cush, Ethiopia.

This would mean that the Jews of Dan have been in Ethiopia since 700 B.C.E. This also means that those Jews know nothing of Purim, Chanukah or any conversion laws added by the rabbis. Their connection with formal Jewish life ceased in 700 B.C.E. Any events and rabbinical additions were not known to them.

In 1990, 2600 years later, the Israeli Government learned of a danger to the Ethiopian Jews because of a civil war. Therefore, in Operation Solomon, 1990 C.E., Ethiopian Jews were transported to Israel. The rabbis wanted the Ethiopian Jews to undergo modern conversion laws. Some were insulted. Most accepted the revisions. Steps and doorknobs were the biggest thrill to the Ethiopian Jews, the Danites.

Now we have our own Frederick Polo-Binyomin travelers. They bring back to us news of communities and synagogues. The news of no Torah in the farthest community, Birabidjon, stirred the travelers. The reader walks down the aisle with a Chumash-Pentateuch book which is kissed by the congregants. There is a distant Frederick dream to bring a Torah to this community. ☆

THE SINGLES GROUP

The singles group idea has once more reared its beautiful head. This time let's not limit it to singles. The program could be the uniting. A walking activity; a speaker at every other meeting, or an Israeli movie not easily seen elsewhere.

I mentioned this to a single who was leaving my home. He didn't even turn around. Was it my imagination? I thought he quickened his pace. ☆

*On behalf of the Lazerow Family,
I gratefully thank the Beth Sholom
Board of Trustees, the congregation,
and all of our friends for your kind
expressions of sympathy
after the passing of my mother,
Hessie Lazerow.*

*Your many donations, cards, visits and
caring thoughts were very comforting
and much appreciated.*

Carl Lazerow

ROSE AND JULES SHAPIRO GARDEN



The cactus flowers in the garden will soon be blooming. Those of us who remember Rose and Jules will be comforted when we enter the building and see the abundant flowers, the tall flowers rising above the thorny cactus plants.

Rose and Jules G'Mach Society was named for their g'mach lifestyle. G'mach, the dispenser of loving kindnesses. ✧

MINYONS ONGOING

Sunday morning and Thursday morning we have breakfast Minyons. We're looking for a congregant to join Don Lachman in preparing breakfast. Don scrambled eggs and peppers this past week. Dee-licious.

He used to do the fake eggs for someone. Don is very accommodating. I saw a cartoon of a bear standing by a maple tree. He had a plate of pancakes in his hand and was holding the plate next to the tree.

Come and help, Thursday and Sunday mornings. Don may let you in. Summertime should be easier schedules. ✧

VIBRANT PERSONALITIES

In our personal lives, our loved ones are not forgotten. However, in the life of our community, there are waves of members whose memories we would like to keep. There are new members constantly who step up and become the ones to run the gamut of volunteerism.

There are ways for the whole community to be cognizant of a Yahrzeit. Be a sponsor of a speaker. In the introduction we will speak about the life of the deceased. The sponsor can be the one to speak of the deceased.

Naomi Lazerow's grandmother was remembered with a lecture in her memory. Elly Lyon was remembered by a lecture sponsored with funds from her estate. Rabbi David Finkelstein co-sponsored a lecture in honor of his mother's birthday.

The other way to bring alive the memory is to sponsor a luncheon or an Oneg Shabbat. It is a simple method to mark a special time by sharing with the community. ✧

CLASSES

Monthly classes continue in the summer. On the second Tuesday it's in Walkersville. On a Tuesday or Wednesday (to be decided monthly) it's in Farmbrook. On a Sunday it's in Virginia and another Sunday it's in Clover Hill.

Now you're going to read this and think, maybe... but Nisht. If I would invite you the chances are that you would try it. The glitch in that is, I'm not doing that. As much as I would like you to join us, every group is a personal experience, I'm not doing the inviting. But don't count on my not asking you. ✧

In Memoriam



*Beth Sholom offers sincere condolences
to
Larry Hornstein & Family
on the passing of his uncle,
Sam Stern*



PRAYER SUBTLETIES

In order to experience prayer changes, one has to be familiar with the prayers. How can I transmit this experience without our congregants using the prayer book? I would like you to experience what I experience.

That transmittal eludes me. I cannot find a way....yet.

During the last days of Pesach there is a line which reminds us of the winter season in Israel. "He causes the wind to blow and causes the rain to fall." This line, which we have recited since Succos, is now omitted.

During the holy days of Pesach, the first two and the last two days, the silent prayer is different. At the last service on the last holy day, I begin to miss the special silent prayer. I will not recite this silent prayer again until Shavuot, seven weeks away.

The silent prayer in general is the substitute for an offering brought in the Holy Temple.

Conservative, Reform, Orthodox or Reconstructionist... familiarity with the prayers has nothing to do with the different identities in Judaism.

My congregants, in general, cannot experience the farewell to the holiday silent prayer. Some of us are becoming more and more familiar with the weekday and the Shabbos silent prayers and now the festival silent prayers. We can't help but notice the frequency of the words, "Joy and celebration (simcha)." ✧



WAS YOU THERE, CHARLIE?....NOT YET

You might say that June was relatively clean of special observances. However, not if you read our schedules.

Women are obligated to recite two silent prayers a day. One is good, too. When you do the one in the morning, you might want to repeat it at night, maybe. Imagine the impact! The children come home from school. "What are you doing by the window mom?" "I'm praying. I'll be through in a minute."

Hubby comes home. "Hi sweetie, what are you doing on the deck?" "Praying. I'll be there in a moment."

You get it? I think it could change the tempo of your home. You have a Mezzuzah on the door. Why not carry the Mitzvah a little further? ✧

*Sending a heartfelt thank you to
my many friends for all your well wishes
and donations for my speedy recovery.*

*Warmly,
Shirley Block*

BETH SHOLOM SOCIAL CLUB

Summer has arrived with its sunshine & heat
Consider joining the Social Club--it can't be beat.

We share opinions on that and this
With smiles and hugs you don't want to miss.

The latest books, movies, shows and more,
Music, politics, you never know what's in store.

No need to travel to the sun or moon,
If you are seeking friendship, come join us in June.

Thursdays mornings at 11:00

June Schedule:

Meetings - 6/7, 6/14 6/28

Lunch out - 6/21

For more information, call president
Bessie Pollicove at 301-845-6682.

**REMINDER: All Bulletin submissions
must be received in the office by the 15th
of the preceding month!**

HERMAN MILLER YAHRZEIT

This year there was one Shabbos during the week of Pesach. Since it was Easter weekend, the Miller children were able to come to Frederick for their father’s Yahrzeit.

The Miller family and the Shul goes back to at least 1927 and earlier. I know because Sam Miller, A.H., told me that in 1927 he convinced Leo Weinberg to purchase a Torah before engaging a rabbi.

Sam Miller was vice-President for many years. He carried out the orders of the president, Miss Jeanette Weinberg, A.H. She carried the finances of the Shul. Membership cost \$25.00 a year. Sam and his wife, Regina, had five children in Frederick. Herman was one of twin boys. There were three sisters born before the twin boys. The Shul was home to the Miller family. The children played in the Shul during services.

Herman’s mother, Regina, died in the Shul on Purim night.

Herman was president of our Shul.

Herman was a shtik (a total piece) positive. In his growing up in Frederick he remembered and experienced the years when there was no rabbi. When there was a rabbi, he really appreciated having a rabbi. In his attitude and attentions you could tell that he remembered when there was no rabbi.

Herman and Shirley were Frederick High sweethearts, who subsequently married.

Herman, as president, heard many suggestions. His operatus vivendi was “Loz zei gayn.” Let them go. They don’t like it, “Loz zei gayn.”

2nd Street was his Shul. The Community Center? He loved it. He attended Shabbos dinners. Like a hand in a glove, he was to Jewish things.

He drove Beck Wolberg, A.H., and me to adult classes for many years. When he called for Beck, he would get out of the car, call for her, and then walk her down to the car; the same when he brought her home.

He was an attorney. His mind often worked faster than his mouth could express. His children? They were an extension of his being.

So, for Herman’s Yahrzeit, the family was there at the 2nd Street sanctuary. Of course! Where else? ☆



National Council of Jewish Women
Frederick Section

A FAITH IN THE FUTURE
A BELIEF IN ACTION

by Marianne Erlichman, Vice President

National Council of Jewish Women-Frederick Section had another busy month. On May 6, we bowled to raise money for Big Brothers/Big Sisters of Frederick County. Thanks to Paula, Sharon, Marcy and Marianne, who attended, and to those who donated money to our team. We had so much fun; we are ready to join a bowling league!

If you missed bowling, you will have an opportunity to do BINGO! On June 3rd at 2:30 p.m. we will sponsor a Bingo party for the residents of the Montevue Home. If you would like to help in any way, please call Margie Barber.

We have given several deserving community groups financial support recently. These groups include the Montevue Home, The Frederick Memorial Hospital Cancer Patient Assistance Fund, Small “Zones of Peace” and the Maryland Ensemble Theatre. We try to select groups that members of our section have a connection to so that we know our financial support will be put to good use in the community.

NCJW-Frederick Section also sent a Mother’s Day gift to the family that we had adopted for Chanukah. The Mother of that family received several gift certificates from us. Happy Mother’s Day!

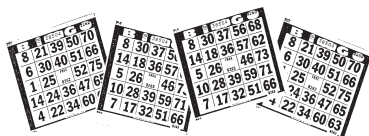
We have finished collecting school supplies. To all who donated to our “bin” set up in the Beth Sholom C.C. lobby, a big “Thank You.” Margie Barber reports that the items were donated to the West Frederick Middle School. The school personnel were very appreciative.

We have started our major fundraiser of the year – the Calendar and Directory Project. Look for your order form in the mail to order your calendar and directory. Personalize the calendar by adding your family’s special dates. If you know of anyone who would like to advertise on the calendar, please call Marianne Erlichman. As usual, extra copies of the Directory will be available for purchase.

Our next and final meeting of the “club” year is Sunday, June 10th at 10 a.m. at Marcy Taylor’s house. We will have a “pot luck” lunch after the morning meeting while we plan our strategy for next year. Each person is asked to bring either a salad or “light” fare for lunch to share. Call Marcy for directions at 301-694-8212.

For more information call Marianne Erlichman at 301-694-9217.

BINGO VOLUNTEERS NEEDED



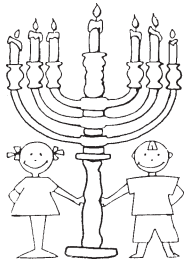
PLEASE DONATE A FEW HOURS OF YOUR TIME
TO BETH SHOLOM’S BIGGEST FUNDRAISER

CALL JANET AT 301-663-3437

THANK YOU!!

Beth Sholom Early Childhood Center

by Margie Barber, teacher
Four-Year-Old Classes



Here we are, another year of school ending at Beth Sholom Early Childhood Center, a place where a LOT of learning takes place each day. Socially, the children are constantly honing their friendship skills. It is a work in progress, and we are thrilled when, over the months, we observe their significant improvements. Academically, our students build and build upon the skills they learn each day, and the results never cease to amaze us. Just recently in the Bumblebee class (four/five-year-olds), we played a matching game with Jewish symbols and pictures. Some were from holidays and customs we had learned about seven and eight months ago. No problem.....there was always one or more students who could correctly identify the picture. To create an optimum learning atmosphere, teachers make every effort to assess each child's individual academic level, and we then present challenges for each student accordingly.

One of our main goals here at Beth Sholom Early Childhood Center is to offer an environment brimming with love, acceptance and positive challenges. This way, children will enjoy coming to school, and will acquire a love of learning that we hope they will retain all through their school years. As we conclude our school year, we bid a fond farewell to the Bumblebees and the kindergartners, and we look forward to those students who will be entering our school for the first time, for the second time, and even for the third time. And we teachers also look forward to some R&R this summer!! ☆



Join Beth Sholom

If you would like to be a member of Beth Sholom, we are now offering your first 3 months free, plus a 50% discount for the remainder of the fiscal year. Join before the High Holidays - your ticket for all services is included in your membership!



LETTERS



Hi Rabbi,
Thank you so much for coming to the National Day of Prayer. It meant so much to have you there. Thanks for laying down any differences to be there. So many Christians! We love Israel and the Jewish people! I liked what you said about the Book of Leviticus. Always looking at ourselves first; others afterward. G-d is Holy and to be feared. There is none like him. Thanks again.

Hi Conrad,
Could you please make sure that any Minyonim you arrange are on the office calendar. Also, Sunday and Monday services need to be held upstairs in a classroom to avoid the bingo commotion.

Rabbi,
Your weekly email mentioned Rockefeller. It reminded of an old joke my father used to tell. Two poor Jews sitting on the curb. One says to the other, "What do you think it would be like to be as rich as Rockefeller?" The other says, "If I were as rich as Rockefeller, I'd be even richer than Rockefeller." "How is that? He answers, "I could teach Hebrew on the side."

Rabbi,
I will go to the Baltimore Mikvah on Tuesday. I'm very excited.

Rabbi,
Today was day 9 of our East Coast Relay from MA to West Palm Beach, FL. Our group is 9 super athletes and then me. So far we have one down with Achilles injury, a calf injury, kidney bruising and heat stroke. Guess who keeps chugging along like a metronome? Me! I'm doing Frederick and slow runners proud.

Dear Rabbi Kosman,
My wife and I appreciate the article you wrote in the May issue of your synagogue Bulletin about our daughter, Nan Sarb. She was a remarkable woman up to the end of her life. She had a strong faith in G-d. Nan really had a great love for your synagogue and felt very close to you and Mrs. Kosman.

Thank you for being there for Nan when she needed to meet with you, and for the other occasions when she lived in Frederick. ☆

**Yahrzeits
Iyar/Sivan 5767
June 2007**



June 1st*	Jennie Burk Lillian Diener Morris Pincus Daniel Fromer Esther G. Orenstein Rose Shapiro Jacob Leib Kahan	
June 8*	Ernst David Lucille Land Henrietta Fliss Anne M. Rosen William Cohen Anna Levine	Virginia Labeau Maurice Louis Sclar Clara Pittleman Robert F. Kopelman Rita Spectre Barbara Seres
June 15*	Irene Bluethenthal Carol Friedman Agop Kaiktsian Manuel Weinberg Herschel ben Meir Ethel Mogilewsky Leonard Wolfson	Irwin Wolberg Morris Kapiloff Golda Blum Alice Reichel Ada Stempa Jack H. Jacobs
June 22*	Aaron Ashwal Harry Zebovitz Philip Freilich Jack Gordon Philip Weiss Miriam Blum Dave Satlof	Helen Sarah Neufeld Eleanor Kochonin Florence Feldman Strong David Feldman Harry Blatt Fannie Nasher
June 29*	Gilbert Lowenthal Simon Pearlman Sheldon Haber Estelle Brandorff Gerald Kyte Rose Potash Samuel Guss Morris Kerpelman Edward Pickert Max Fleisher Freda Sclar	



* indicates Friday on which name will be read from the Bima.

DONATIONS

Building Fund

Hilde Kalonka for the speedy recovery of Michelle Fritz
Morty & Leah Reitman for the Yahrzeit of Rebecca Kayte
Matthew & Fay Kaufman Sanders for the speedy recovery of Shirley Block
Peter & Marcia Newfeld in honor of the birth of Josh & Gina Rubin's son
Peter & Marcia Newfeld for the good health of Nancy Gorelick
Larry & Marianne Hornstein & Family in memory of Sam Stern

Chometz Donations

Marvin & Pauline Horn
Larry & Marianne Hornstein
Barry & Cindi Diamondstone
William & Goldie Lechter
Linda Chapin
Earl & Judy Nelson
Morrie & Norma Kelsey
Marty & Marianne Erlichman
Marilyn Smith
Tina Prenskey
Ida Ruck
Donald & Margery Miller Moores
Howie & Shari Scher
Glenn & Myra Treiber
Tim & Carol Cressman
Maish & Florence Guss
Jane Knopfmacher
Paul & Rita Gordon
Michael & Karen Blank
Jim Lewin & Carolyn Snyder
Dorothy Halle
Sid & Michelle Kandel
David & Gayle Bromberg
Nelson & Celia Zahler
Peter & Marcia Newfeld
Robert Routier & Myrna Ulloa

Community Foundation Educational Endowment Fund

Irwin & Harriet Fishman for the Yahrzeit of Yehudah Lieb Fishman
Rabbi & Carol Kosman

Early Childhood Center

Janis Sclar in memory of Cecelia Friedman
Sylvia Sclar in memory of Cecelia Friedman
Hal & Shirley Neufeld for the Yahrzeit of Robert Lazerowitz
Brian & Brenna Rader in memory of Ben & Emma Laskin
Joan Pearlman for the Yahrzeit of Nicholas Anton
Shirley Block in honor of Dianne Block's birthday
Sylvia Sclar for the Yahrzeits of Barbara Seres and Maurice Sclar

(Continued on page 10)

In Memory of Hessie Lazerow

James & Sharon Nicholas - Early Childhood Center (ECC)
 Garry & Micki Cohen - Building Fund
 Dan & Sharon Kuebbing - Building Fund
 David & Sara Levine - Education Fund
 Robert & Margie Cantor - Education Fund
 Jim Lewin & Carolyn Snyder - G'Mach Society
 Barney Kandel - Education Fund
 Joe & Ilene Liszka - General Fund
 Barry & Cindi Diamondstone - General Fund
 Woody & Bobbi Price - Rabbi's Discretionary Fund
 Tim & Carol Cressman - Rabbi's Discretionary Fund
 Shirley & Harold Neufeld - ECC
 Ken & Ellen Berkowitz - ECC
 Gene & Marion Zebovitz - General Fund
 Marty & Marianne Erlichman - General Fund
 Jeff & Leslie Williamson & Family - G'Mach
 Boyd & Susan Dwyer - ECC
 Rob & Marge Edelman - Rabbi's Discretionary Fund
 Robert & Sherry Sanabria - Building Fund
 Milt & Joyce Gordon - Building Fund
 Mark & Beate Frankel - ECC
 Glenn & Myra Treiber - Torah Fund
 Adam & Caroline Treiber - Torah Fund
 Eric & Eileen Marcus - General Fund
 Don & Margie Barber - ECC
 Sid & Michelle Kandel - ECC
 Morrie & Norma Kelsey - ECC
 Peter & Marcia Newfeld - Building Fund
 Andy & Linda Mekelburg - General Fund
 Joe & Karen Ashwal - Building Fund

Education Fund

Irene Feuer for the Yahrzeit of Abraham Piasetzky
 Howard & Iby Levine for the Yahrzeits of Jacob Levine and August Hruska
 Barney Kandel for the speedy recovery of Irwin & Harriet Fishman
 Regina Kaiktsian for the Yahrzeit of Jack Kaiktsian
 Tina Prenskey in honor of Joe Ashwal
 Ernie Nasher for the Yahrzeit of William Nasher
 Jesse & Gloria Dubin for the Yahrzeits of Paul & Ruth Dubin
 Paul Kessler & Betsy Nicholas for the Yahrzeit of Ethel Kessler
 Marvin & Sylvia Elfman for the Yahrzeit of Esther R. Elfman

Education Fund for Shavuot

Ida Ruck
 Steven Bernstein
 Julius & Betty Isaac
 Joan Pearlman
 Marty & Marianne Erlichman
 George & Carolyn Needle
 Gene & Marion Zebovitz
 Sylvia Sclar
 Barry & Cindi Diamonds in memory of Sam Pollicove and Solon & Pauline Diamondstone

Harold & Shirley Neufeld
 Victor Buckwold
 Frank Spadaro
 Tina Prenskey in memory of Bill Prenskey
 Janis Sclar
 Barney Kandel
 Marty & Janet Potash
 David & Trish Ben-Avraham
 Howie & Shari Scher in memory of Frank & Dorothy Kleinman and Etta Scher
 Len McWilliams
 Sanford & Carol Blum
 Arleen Chafitz in memory of Stella & David Schraft
 Maish & Florence Guss
 Marshall & Sharon Botkin
 Carl & Naomi Lazerow in memory of Hessie Lazerow
 Richard & RoseAnn Patchen in memory of Allison Patchen, Shirley & Julius Patchen, Beatrice & Harold Achiron
 Jason & Robin Herman
 David & Paula Nathanson in memory of Harry Nathanson and Zelda Zlotin
 Martin & Martha Zweig
 Ethan Borg & Jennifer Leigh

General Fund

Dianne & Shirley Block for the Yahrzeit of Sylvan Block
 Wallace Alvin Lusk, Jr.
 Steven & Patricia Brand for the Yahrzeit of Maxwell Brand
 Gene & Marion Zebovitz in memory of Arthur Markowitz
 Charles, Charlotte & David Glick for the speedy recovery of Beate Frankel
 Brian Parker for an Aliyah
 Steven & Karen Ambrose
 Sanford & Carol Blum for the Yahrzeit of Anna Blum
 Kathleen & Sherman Kahan for the Yahrzeit of Jacob Leib Kahan
 Esther Fromer for the Yahrzeit of Daniel Fromer
 Andy & Linda Mekelburg for the Yahrzeit of A. Richard Mekelburg
 Ken, Regina & Julia Truitt for the Yahrzeit of Samuel Miller

Rose & Jules Shapiro G'Mach Society

Ida Ruck in honor of the Satnick's new home
 Marshall & Sharon Botkin for the Yahrzeit of Morris Soroka
 David & Trish Ben-Avraham

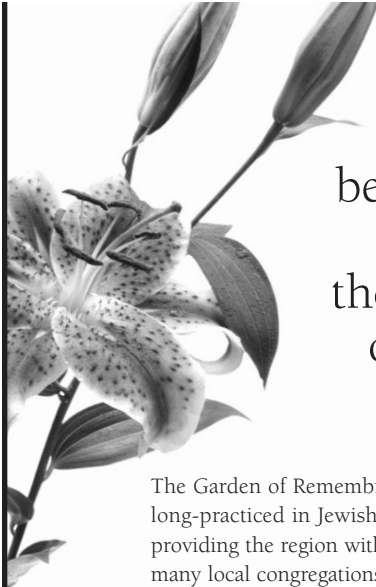
Parker Interpreter Fund

Rabbi & Carol Kosman

Rabbi's Discretionary Fund

Eric & Patty Towler
 Roz Nasher for the Yahrzeits of Morris & Rebecca Linzner
 Rob & Marge Edelman in honor of the birth of the Gene & Gayle Klupt's granddaughter

(Continued on page 11)



“May you be comforted among all the mourners of Zion and Jerusalem.”

The Garden of Remembrance renews a custom long-practiced in Jewish communities of old: providing the region with a unified cemetery where many local congregations offer burial areas in which their members can purchase plots.

To learn more about the region's most inclusive Jewish cemetery, just minutes from Frederick in Clarksburg, Maryland, call our Help Line at (301) 428-3000.



www.gardenofremembrance.org

DAWN CRAMER STEIN

Certified Public Accountant

Tax Preparation • Accounting Services

304 Delaware Road
Frederick, MD 21701-4618
dawn@dsteincpa.com

Tel: 301-663-8368
Fax: 301-663-6786
Cell: 301-964-3326

DONATIONS (Cont.)

Prayer Book Fund

Alvin & Judith Simon for the Yahrzeit of Ada Stein

Torah Fund

Glenn & Myra Treiber for Aliyahs and Prayers for the Sick
Glenn & Myra Treiber in memory of Celia Bliss
Glenn & Myra Treiber for the Yahrzeit of Ida Spectre
Charles, Charlotte & David Glick for the speedy recovery of
Irwin Fishman



Got kids?
Do spills, stains, spots seem to appear “out of nowhere?”
One call takes care of it all!

Classic Cleaning Systems, Inc.

DAVID GINSBURG, PRESIDENT

Upholstery - Rug - Drapery Cleaning

168 Midsummer Drive
Frederick, MD 21702

301-228-2976
800-GO-SPOTS

Real Estate
Residential, Investment, Land



MJ Minton
RE/MAX 100

office: 301.695.5500 cell: 240.674.3374
www.MJ-Minton.com



*Cards for the New Year are here!
Beautiful new designs*

*Free return address imprint on backflaps
if ordered by August 15th!*

Come into the office and take a look.



JASON B. ZAHLER
REALTOR®

North Potomac / Gaithersburg Office
189 Kentlands Boulevard
Gaithersburg, MD 20878
Direct: 301-548-4220 • Cell: 301-651-1919
Office: 301-975-9500 • Fax: 301-330-5933
jason.zahler@lnf.com
jasonzahler.lnfre.com



longandfoster.com 



**WE TRANSFER YOUR
HOME MOVIES & MEMORIES
TO VIDEO!**



429 East Patrick Street • Frederick MD 21701
301-694-3500



David J. Levine, D.P.M., C. Ped.
Podiatrist & Pedorthist
www.Levinefeet.com

63 Thomas Johnson Drive
Frederick, MD 21702
Suite C

301-696-0818
Fax 301-696-8872



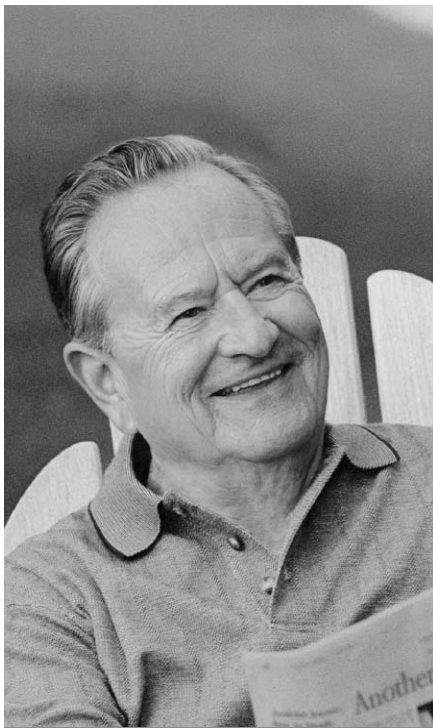
Mark S. Hoffrichter, D.D.S.
Practice Limited to Oral & Maxillofacial Surgery

Centerpark Medical Center
604 Solarex Court, Suite #207
Frederick, MD 21703

- Extractions
- Dental Implants
- Wisdom Teeth
- Anesthesia

(301) 695-5755

www.HoffrichterDDS.com



**Happy Father's Day from our
Sunrise family to you.
Celebrating 15 years of
serving seniors in
Frederick County.**

Sunrise seniors have one thing in common. They're all different.

At Sunrise, we celebrate each of our residents as unique individuals.

This approach helps seniors live the life they want to live. At Sunrise of Frederick, we provide an atmosphere that is cozy, welcoming and pet friendly. We focus on the details of living, from home-cooked style meals to a variety of room accommodations, fun and

enriching activities on and off the premises and special programs for the memory-impaired. We call it resident-centered senior living, and it begins the day a senior walks into our community.

Visit or call Sunrise of Frederick, and discover how we're different.



Sunrise of Frederick 301-663-9500 990 Waterford Dr. (Off Baughmans Lane) Frederick

Assisted Living Alzheimer's Care

For more information and a FREE online newsletter, visit www.sunriseseniorliving.com or frederick.dcr@sunriseseniorliving.com



Sir Speedy
 PRINTING • COPYING • DIGITAL NETWORK
301-695-2929



We print the old fashioned way.
 We help our customers.



Sit down with Patti, Mary Alice or Janet and see how helpful they can be with your next printing project.

316 E. Church Street • Frederick, MD 21701



Eye To Eye
 Family Eye Care
 Dr. Beverly Chado
 Dr. Steven Chado
 Optometrists
 2060 Yellow Springs Road
 Frederick, Maryland
 301-695-8771

Sunshine Management Corporation

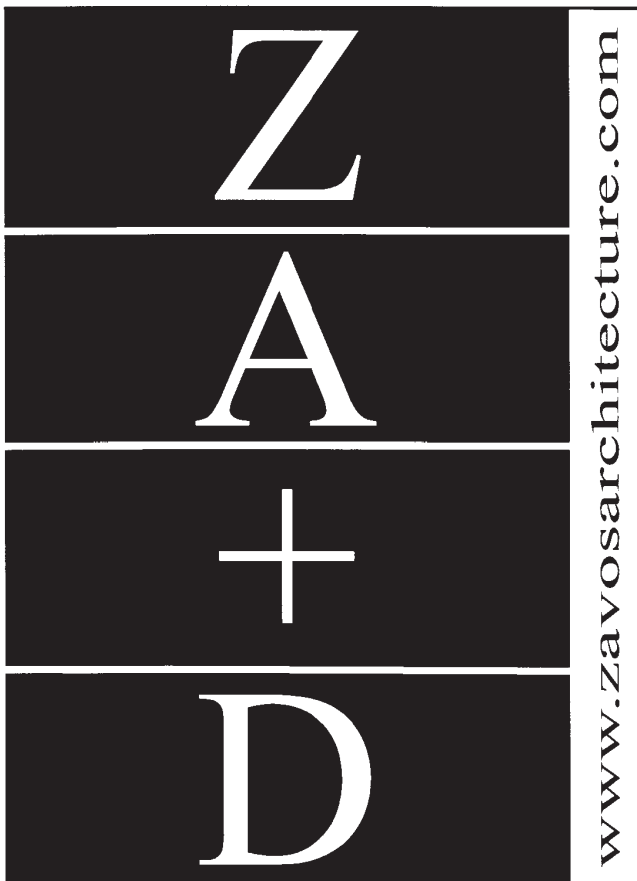


Ambers Professional Center
 178 Thomas Johnson Drive
 Suite 201
 Frederick, MD 21702-4334

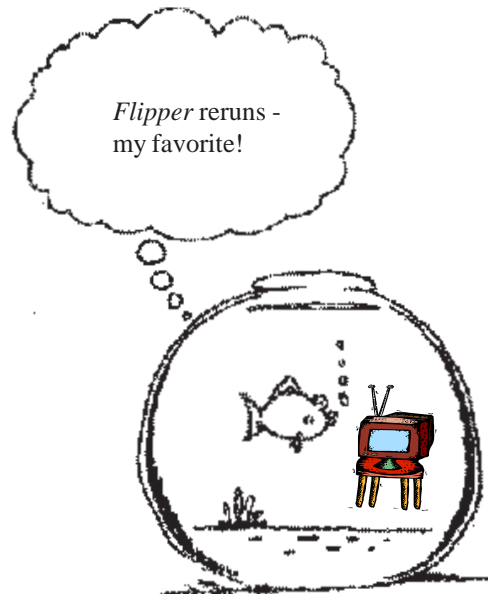
Phone: (301) 663-8383 ext: 202
 Toll Free: 1-800-663-4990

Nelson S. Zahler, President
 Broker

Fax: (301) 663-0070
 email: nelsonz@sunshinemanagement.net



Z
A
+
D
 www.zavosarchitecture.com



The Bulletin and Rabbi's Weekly Email are both available as hard copy. Call the office to receive as "snail mail."



THE TRADITION OF SERVING CONTINUES

Reducing the complicated task of arranging a funeral service has now become even easier for the residents of Frederick County's rapidly growing Jewish community. Edward Sagel Funeral Direction, Inc. and Danzansky-Goldberg Memorial Chapels, Inc. are pleased to announce the expansion of their services to the residents of Frederick County and to the members of Beth Sholom Congregation.

We have a long tradition of serving the Jewish community of Maryland, Washington, and Northern Virginia for over 80 years and will continue the tradition of offering unsurpassed service and value.

We offer traditional and contemporary service options in keeping with the Jewish tradition, including:

- Professional staff with over 100 years of experience in dealing with bereaved Jewish families
- Services at our Chapel, **your Synagogue** or Graveside
- Taharah, Tachrichim and Shomrim upon request
- World-wide arrangements including burial in Israel
- Memorial Candles and Yahrzeit Calendars

And, as the area's only Dignity Memorial® Jewish providers, we are proud to offer exclusive benefits including:

- 100% Service Guarantee
- Bereavement Travel Savings Program
- National Transferability of Prearranged Services
- 24-Hour Bereavement Counseling

Edward Sagel Funeral Direction, Inc.

1091 Rockville Pike, Rockville, MD 20852
(301) 217-9400 • (800) 217-9403
www.sagelfuneraldirection.com



Danzansky-Goldberg Memorial Chapels, Inc.

1170 Rockville Pike, Rockville, MD 20852
(301) 340-1400 • (800) 281-1471
www.danzanskygoldberg.com

Licensee is licensed to practice mortuary science in Maryland.

JUNE 2007

Sivan/Tammuz 5767

Sunday	Monday	Tuesday	Wednesday	Thursday	Friday	Saturday
					1 ^{15 SIVAN}  8:07 8 p Services - CC	2 ^{16 SIVAN}  Beha'alotecha 9:15 a Services - CC
3 ^{17 SIVAN} 9 a Minyon 10:30 Bingo Appreciation Brunch Bingo	4 ^{18 SIVAN} Shoresh Bingo	5 ^{19 SIVAN}	6 ^{20 SIVAN}	7 ^{21 SIVAN} 8 a Minyon 11:30 a Social Club 12 Sisterhood Meeting	8 ^{22 SIVAN}  8:11 8 p Services - CC Bas Mitzvah of Carly Peltz	9 ^{23 SIVAN}  Shelach 9:15 a Services - CC Bas Mitzvah of Carly Peltz
10 ^{24 SIVAN} 9 a Minyon 10 a NCJW Meeting Bingo	11 ^{25 SIVAN} Bingo	12 ^{26 SIVAN}	13 ^{27 SIVAN}	14 ^{28 SIVAN} 8 a Minyon 11:30 a Social Club 7:30 pm Board of Trustees Meeting	15 ^{29 SIVAN}  8:15 Early Childhood Center Graduation 8 p Services - CC Bar Mitzvah of Bradley Goldstein	16 ^{30 SIVAN}  Rosh Chodesh Tammuz - Day 1  Korach 9:15 a Services - CC Bar Mitzvah of Bradley Goldstein - Mincha
17 ^{1 TAMMUZ}  Rosh Chodesh Tammuz - Day 2 9 a Minyon Bingo	18 ^{2 TAMMUZ} Shoresh Bingo	19 ^{3 TAMMUZ}	20 ^{4 TAMMUZ}	21 ^{5 TAMMUZ} 8 a Minyon	22 ^{6 TAMMUZ}  8:17 8 p Services - CC Bar Mitzvah of Sam Herman	23 ^{7 TAMMUZ}  Chukat 9:15 a Services - CC Bar Mitzvah of Sam Herman
24 ^{8 TAMMUZ} 9 a Minyon Bingo	25 ^{9 TAMMUZ} Bingo	26 ^{10 TAMMUZ}	27 ^{11 TAMMUZ}	28 ^{12 TAMMUZ} 8 a Minyon 11:30 am Social Club	29 ^{13 TAMMUZ}  8:17 8 p Services - CC Bar Mitzvah of Kevin Dwyer	30 ^{14 TAMMUZ}  Balak 9:15 a Services - CC Bar Mitzvah of Kevin Dwyer



BETH SHOLOM CONGREGATION
1011 North Market Street • Frederick, MD 21701

Non-Profit Organization
U. S. Postage
PAID
Frederick, MD
21701
Permit No. 162

Table of Contents

Advertisements.....	11-14
Birthdays & Anniversaries.....	3
Bulletin Angels.....	2
Calendar.....	15
Condolences.....	5
Donations.....	9
Early Childhood Center.....	8
NCJW	7
New Members.....	4
President's Corner.....	1
Social Club.....	6
Special Events.....	3
Yahrzeits.....	9