

Beth Sholom Congregation

From Generation to Generation ... Together We Grow

1011 N. Market St · Frederick, MD 21701 · (301) 663-3437

bethsholom@bethsholomfrederick.com • www.bethsholomfrederick.org

November 2011
Cheshvan/Kislev 5772
Volume XIII, Issue 5

Murray Singerman, Rabbi / rabbisingerman@gmail.com

Morris Kosman, Rabbi Emeritus / mkosman@aol.com

Gayle Bromberg, President / gaylebromberg@yahoo.com

Marcia Newfeld, Executive Director / mnewfeld@bethsholomfrederick.org



Board of Trustees

Gayle Bromberg, President
Betsy Nicholas, 1st Vice Pres.
Ilene Liskza, 2nd Vice Pres.
Chris Eissenstat, Secretary
Marty Standel, Treasurer

Andy Carpel
Susan Dwyer
Sharon Edelstein
Andrea Eyler
Barbara Fromer
Elissa Gross
Richard Haber
MJ Minton
Martin Potash
Diana Schobel
Howard Wetrogan
Bruce Zavos

Marcia Newfeld, Exec. Dir.
Janet Potash, Admin. Asst.
Ken Berkowitz, Maintenance
Eileen Marcus/Ellen Berkowitz,
Kitchen Staff



Jewish Food Festival

November 6, 2011

11:00AM - 2:00PM

Beth Sholom Community Center
1011 N. Market Street, Frederick, MD 21701

**Brisket, Corned Beef, Hot Dogs, Kugels,
Knishes, Falafel, Tabouli**

301-663-3437

bethsholom@bethsholomfrederick.org

www.bethsholomfrederick.org

The President's Corner

by Gayle Bromberg
gaylebromberg@yahoo.com



Although I was away visiting family for the holidays of Sukkot and Simchat Torah, I've heard that Richard Haber and Morrie Kelsey led the well-attended services beautifully. He and Mitch Abrams also led Tot Shabbat on Oct. 21. These services also went very well. Todah Rabah (Many Thanks) to Richard and Mitch. Just as we want to implement a regular schedule of special events for Friday night services, varying from Tot Shabbat to dinners to speakers, we are working on organizing a regular schedule of different approaches to Saturday morning services as well. The variety of options could temporarily give us a way of seeing what formats are most meaningful, appealing, and helpful to the majority of our congregants, and may become a permanent feature of our schedule of services. The options could include a traditional minyon once a month, and a service where the Torah is read in English, followed by Torah study. This would give congregants an opportunity for questions and discussion in order to gain or deepen understanding of the meaning of the week's Torah portion.

Cantor Aaron Marcus has been hired to tutor the upcoming B'nai Mitzvah and will begin a class on Trope on Sun., Oct. 30. Some of the parents have met with Cantor Marcus and are extremely pleased.

Our application for affiliation with the Conservative Movement has been approved by the regional office and is being reviewed by the national committee. We do not expect any problems with approval. As soon as we have completed the affiliation process, we expect to participate in a board leadership training workshop, which will help us organize more effectively to plan and prepare for the future.

We are also moving forward on the sale of the Second Street house. Although we had taken the house off the market and are in the process of getting bids on making some repairs, we have been advised that someone has strong interest in the house and may be making an offer. We have also been making progress on the Second Street Synagogue. One of the nice things you may notice is that some of the items that have continued to be stored downtown are now being brought to the Community Center, where they can be seen, used, and appreciated. Thanks to Marcia, Betsy, Eileen and Chris for cleaning the downtown kitchen and rescuing these treasures. (At least, they're treasures to us because of their sentimental and historical value.)

When you stop in at the Community Center, you can't help but notice the very attractive display of Chanukah and b'nai mitzvah gift items in the Gift Shop. Thank you to Janet Kaplan and Joan

Abrams for taking over management of the Gift Shop and for their thoughtful selection of inventory.

Rabbi Singerman has moved out of the rental house and is staying in the Rabbi's office at the Community Center for the Shabbatot he is with us. We have agreed to a new half-time contract for the remainder of his time with us, until January 31. Rabbi Singerman will lead services on two to three Shabbatot per month, and I'm happy to be able to report that he will continue to give his excellent Sunday morning adult lectures (topics and dates to be announced soon) once a month. He will also be available if needed by congregants for life cycle events or emergencies. The Religious Affairs committee has agreed to lead services on the weekends Rabbi Singerman is not here.

During this time of transition, Marcia and Janet are doing way more than holding down the fort. They are reorganizing many operations that need streamlining or improving, attending to needs for upkeep and maintenance, especially in the Community Center, coming up with ideas and implementation strategies for programs, community building, welcoming new members, and encouraging greater involvement in services and educational programs. Please thank them whenever you see them, and offer to help out in the office if you have the time. They are doing a remarkable job, above and beyond their regular work hours and duties. ☆

GIVE TO GROW

Together

**You can now make donations to Beth Sholom
through our website. Go to
www/bethsholomfrederick.org/contribute.php**

**From the Desk of the
Executive Director**

by Marcia Newfeld
mnewfeld@bethsholomfrederick.org



A yasher koach (thank you) to all who have already responded to our High Holiday Appeal. It is wonderful that so many feel so strongly about the continued financial health of the synagogue.

As Howard Wetrogan said so well in his High Holiday Appeal letter that was sent out, “Beth Sholom Congregation has deep roots within the Frederick and Jewish communities. We provide a setting where you, our congregants, and our children can experience the vitality and beauty of our Jewish heritage in all its many dimensions, while strengthening our Jewish identity and responding to a broad range of needs and challenges.” Many of you are wondering about the state of the congregation’s financial health and I am pleased to let you know that we are doing much better. I believe that the general feeling of the congregation is that we are moving forward in the right direction by affiliating with the Conservative Movement. We are planning many wonderful events. We had a very successful High Holiday season, the kids had a great time at Pizza in the Hut and experiencing the pizza fear factor (please see the photos on page 5), the event being planned for Rabbi and Carol Kosman will be WON-DER-FUL, our first annual Jewish Food Festival is being held the first Sunday in November, we are planning a congregational Chanukah party for December 17 which will be great fun for all ages with dancing, arts & crafts, games and, of course, homemade latkes. Please mark your calendars now.

As Gayle mentioned in her article, we are currently working on making Shabbat even more special than it already is with something different happening every Shabbat. We will keep you posted as the schedule currently needs a little more refining. Rabbi Singerman will be giving a class for the next couple of months on a Sunday morning, brought back by popular demand – stay tuned for more details; Rabbi T, brought to us by Shores, is giving a class on Basic Judaism which will be held every Tuesday evening in November; Hadassah, Sisterhood and NCJW have full calendars of events...things are happening at Beth Sholom. We hope that you will participate as much as you can.

But all of these events and everything that happens at the shul needs funding. As Howard stated, “Our annual operating budget supports our staff, our facility and our educational and programmatic scope.” Your donations to the annual High Holiday appeal help us to provide all of the extras like speakers, congregational events, youth activities, Shabbat dinners and any other ideas that you, our congregants, bring to us. The synagogue is here for you and your family. It is your Jewish home, your Jewish identity. Help us to continue being a positive force in the lives of our families and in the Frederick community. Please donate and donate generously. It is not too late.

By working together Beth Sholom will continue to grow and prosper. Please send in your High Holiday donation today! ✨

Heartfelt thanks go out to the following, who have already responded to our High Holiday Appeal

Ann and Fred Abeles
Amy and Dan Allex
Patricia and Steven Brand
Margie and Bobby Cantor
Sheri and Stuart Cohen
Arlene and Charles Corby
Cindi and Barry Diamondstone
Marianne and Marty Erlichman
Rita and Paul Gordon
Elissa Gross
Patricia and Jack Gruber
Dorothy Halle

Betty and Julius Isaac
Regina Kaiktsian
Janet and Michael Kaplan
Judy Katz
Ellie and Lenny Kinland
Carol and Rabbi Kosman
Goldie and Bill Lechter
Stuart Levine
Sara and Allan Lowe
Anjeannette and Claus Madsen
Jan and Rich Mallardin
Joan Meyer

Paula and David Nathanson
Joan Pearlman
Donna and Robert Pincus
Judy and Earl Nelson
Bobbi and Woody Price
Abby Lee Roane
Sue and Harry Rovin
Beverly Saks
Babs and Bob Savitt
Myra and Glenn Treiber
Maria and David Vershel
Marion and Eugene Zebovitz



National Council of Jewish Women
Frederick Section

**A FAITH IN THE FUTURE
A BELIEF IN ACTION**

by Marcy Taylor, President

NCJW Frederick Section is in high gear! We have been busy eating ice cream and collecting for the Heartly House. We walked in memory of Florence Guss in support of the Alzheimer's Association and raised nearly \$4,000 for Alzheimer research, care and support. Thank you for your support!

Current Collection:

We kicked off our **Adopt-a-Family** program on October 23. This year, we adopted a Jewish (Dreidel) family from Baltimore with four children. We also adopted three local seniors (Snowflakes). The respective organizations are requesting the collected gifts be delivered in early December so all donations are due no later than December 4. Please see the full-page ad in the bulletin for details about this annual program.

Upcoming Events:

Looking for a fun activity? NCJW and Beth Sholom are co-sponsoring a **jewelry-making workshop** just in time for Chanukah! Let your creative juices flow while spending time with your mother, daughter, or friend. This is a great event for ages 8 and above!



When: Sunday, Nov. 13

Time: 1 – 3 p.m.

Where: East Street Beads, Monocacy
Village Shopping Ctr.

Cost: \$20 per person, includes materials
and instruction

Please note that you **MUST** preregister through the Beth Sholom office no later than November 11. Sign up now as this class is limited to 20 people.

Also on Sunday November 13, NCJW will participate in the Hunger Awareness Candlelight Walk. This event is hosted by community agencies and local houses of worship to bring recognition to the needs of the hungry and homeless through prayer. It is part of the National Hunger and Homelessness Awareness Week. Meeting time and location will be announced in the near future.

Upcoming Fundraiser:

It's time to start thinking about your holiday portraits and greeting cards. Sharon Nicholas will be taking **family portraits** again (Thurs., 12/1 from 5-8pm and Sun., 12/4 from 10am-2pm)

so that your holiday cards will be available in time for Chanukah.

Keep a look out for more information on this fundraiser.



*This could be a portrait
of your family!*

For more information on NCJW Frederick Section, please check out our web site www.ncjwfrederick.org or contact any NCJW Board Member. ✨

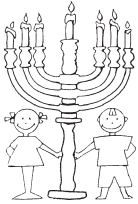


Wrapping gifts for our adopted families

Special Birthdays



**Marvin Elfman
Michael Katz
Dan Kuebbing
Howie Scher
Gary Schwartz
James Toth
Mary Mogan-Vallon**



Beth Sholom Early Childhood Center

by Margie Barber, Director
and teacher of 4-year-olds

Now that we've been in school for over two months, our classes have really come together. Old friendships have strengthened and new friendships have been made. The Twos are now familiar with their teachers, classmates and classroom environment, and there are few if any tears at drop off time! The Threes and Fours are busy, busy, busy, having loads of fun, and are learning a lot. All of the classes have celebrated Rosh Hashanah, Yom Kippur, Sukkot and Simchat Torah. As the children have learned about all the High Holidays, they've learned new Hebrew words, new Hebrew songs, and have learned about the many customs and traditions associated with each holiday. The children enjoyed their apple and honey snacks; they were amazed when Mrs. Nicholas blew the shofar for them, they loved eating in the sukkah; and they marveled at the Torahs on the bimah.

After such a rainy September, we consider ourselves extremely fortunate in that we woke up to a bright and shiny sunny day for our Pumpkin Patch field trip in early October. Almost every student in the school was able to attend. We saw many interesting farm animals. We took a hay ride, slid down the huge slides, jumped in the corn kernel pits, picked pumpkins, and jumped on the giant pillow (trampoline). Many moms and dads also jumped on the pillow. It was a sight to behold! Wish we could go to the Pumpkin Patch every week! ☆

Congratulations
to



Robin and TJ Colligan
on the marriage of their daughter,
Shira Foley to Yechiel Neuman
Sunday, Sept. 4, 2011

PIZZA IN THE HUT

by Batya Toso
Religious School Principal

Our first Youth Activity, Pizza in the Hut, was a fantastic success! On chol hamoed Sukkot (intermediate days of Sukkot) we met in Beth Sholom's sukkah and had 90 minutes of pizza madness. We first made our own personal pizzas, and we enjoyed seeing what other people preferred as toppings (caramel and sprinkles pizza, anyone?) While the pizza was baking Morah Gali taught us about Sukkot and told us a story. We then had a fear factor pizza contest, with two teams making the "scariest" pizza they could think of. Whoever managed to eat an entire slice of this pizza was proclaimed a true hero and given a prize. This was no easy feat; I only managed to consume two bites. Our brave and fantastic winners were: Adam Abrams, Josh Roberson, Sydney Roberson, and Nora Schobel.

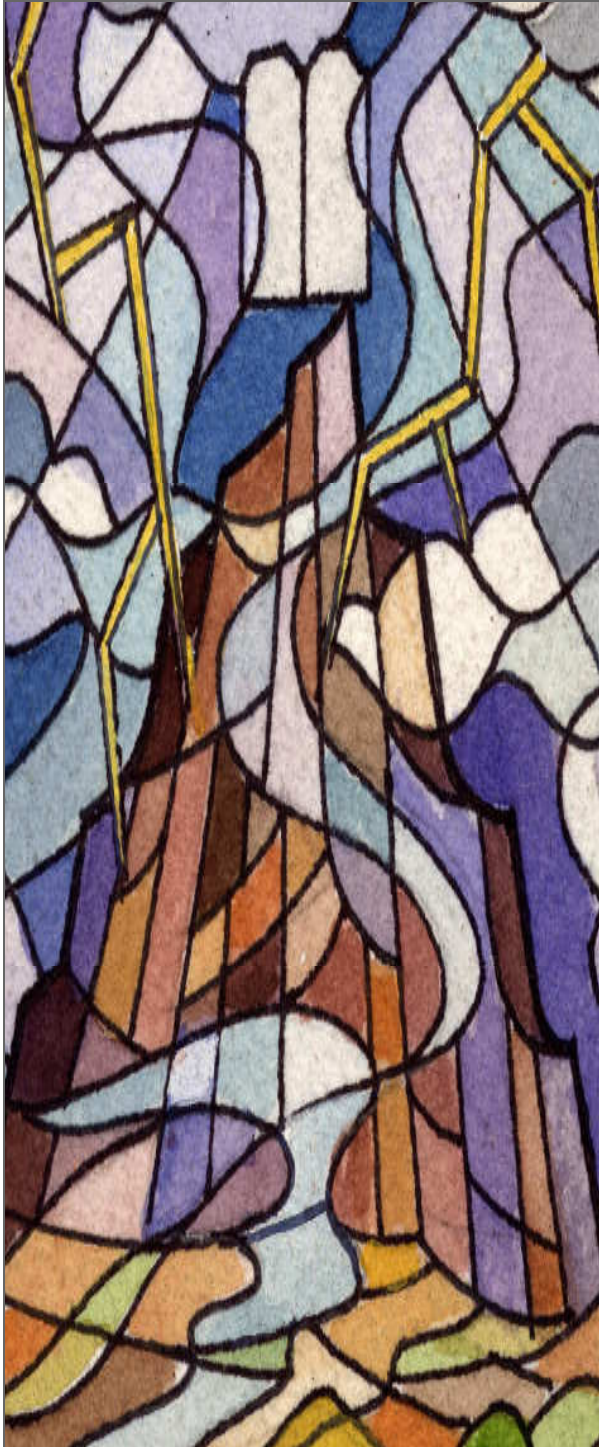
Our next youth activity will be Sun., Dec. 11 from 12:30-2:30. We will make our own menorahs and cook homemade latkes from scratch. Please rsvp to



morabatya@
bethsholomfrederick.org

by November 27.
Save the date and
stay tuned for
more details!

Scary Pizza! Toppings included horseradish, mayonnaise, ketchup, mustard, assorted candy, chocolate, whipped cream, sprinkles, jelly beans, caramel sauce, peanut butter, chocolate sauce, jelly....



JUDAISM 101

*A 5 part series every
Tuesday in November*

**HOW CAN WE BELIEVE IN G-D
IF WE CAN'T SEE G-D?**
Tuesday, November 1st 7:30 PM



**IS PRAYER JUST A BUNCH OF
'MUMBLE-JUMBLE' IN A LANGUAGE
I DON'T UNDERSTAND?**
Tuesday, November 8th 7:30 PM



**KOSHER FOR THE CURIOUS
BUT CLUELESS**
Tuesday, November 15th 7:30 PM



**IS SHABBOS REALLY RELEVANT IN THE
21ST CENTURY?**
Tuesday, November 22nd 7:30 PM



**WHY DOES MITZVAH OBSERVANCE
SEEM SO REGIMENTED?**
Tuesday, November 29th 7:30 PM

All classes will be held at
Beth Sholom Community Center

RSVP to rabbit@shoresh.com
or (410) 358-8571





by Carolyn Snyder

The Beth Sholom Book Club will meet on Sunday, Nov. 20, 2011 at 1 p.m. **This is the third, not our usual fourth Sunday of the month.** We'll meet in the 2nd floor library of the Beth Sholom Community Center. The November selection will be "Tevye the Dairyman and the Railroad Stories," a collection of stories by Sholem Aleichem and translated by Hillel Halkin. An "e-book" summary describes the book as follows:

"Over the course of his thirty-three-year writing career, Sholem Aleichem (born Sholem Rabinovich, 1859-1916) was adored by thousands of readers who combed Yiddish journals in search of his tales and crowded into halls to hear him read. Known to many Americans as "the Jewish Mark Twain," this skilled storyteller wrote insightful, inventive, and entertaining works that continue to interest readers today. Considered individually, his many short stories may be regarded as isolated sketches of Russian-Jewish life at the turn of the century; collectively, his narratives constitute an expansive portrait of life in the Pale of Settlement at a time when the Russian-Jewish community was subject to mounting pressures from both internal and external forces."

Tevye, the principal character in the stories, was the inspiration for the play and later the movie, "Fiddler on the Roof." What makes this edition so very accessible and enjoyable is the translation by Hillel Halkin. His valuable introduction also introduces the reader to the long history of the Jews wandering after the late Middle Ages to the 20th century and explains the societal pressures that led to the pressures and lifestyles adopted by the ever uprooted European Jews. Tevye gives voice to these experiences and how they played out in everyday life.

We welcome anyone interested in good reading. For more information/questions, contact Carolyn Snyder at csnyder239@comcast.net or 301-631-3991. ☆



Sholem Aleichem

KNIT AND NOSH



LADIES (AND GENTLEMEN) WHO LOVE TO KNIT, CROCHET, NEEDLEPOINT AND CROSS STITCH...

Beth Sholom is now the meeting place for a social get-together for crafty (and creative wannabees) to enjoy the company of others, some snacks and discussions of the group's choosing for creative input and kibitzing.

Our recent gathering of 8 enjoyed sharing their family histories of HOW they became knitters, crocheters, etc. from families of origin, with wonderful memories of relatives making hand-knit items and teaching others.

Our next gathering will be Tuesday, November 15, 1-4 p.m. Please note that those interested can come at any time during our gathering, and depart at any convenient time. This is an informal gathering, with SOME instruction for those that may need it, but NOT a CLASS!



NOTICE TO BETH SHOLOM MEMBERS

If you plan to file a dues reduction request for the 2011-2012 fiscal year, you must submit it by Dec. 31. No applications will be accepted after that date.

Please call Marcia or Janet at 301-663-3437, or e-mail mnewfeld@bethsholomfrederick.org or jpotash@bethsholomfrederick.org to receive the application form.



THE NEW SISTERHOOD GIFT SHOP

Sisterhood thanks Sylvia Elfman and Denys Louderback for running the Gift Shop for many years. The shop is now under new management. We have been working hard to get ready for your Judaica business--polishing silver, uncovering lost treasures and freshening up the place. You know where to find us and you will be pleasantly surprised at our gift selection and great prices. Chanukah will be here before you know it. Come visit us on Sundays from 10am - 12:30pm, or just ask someone in the office for help.

Our on-line store is now conveniently located on our website and extends our Judaica selection beyond our small shul store. You will find everything you could possibly need or want, including FREE e-cards. Please send these cards generously; they are beautiful and each one includes a link to the Beth Sholom Web site and the on-line store, enticing membership and driving sales. Frederick is now the Judaica capital of northern and western Maryland - spread the word!



Personalized greeting cards for Chanukah are now available from the Beth Sholom office at a substantial discount.
 . Call Janet at 301-663-3437 for more information.

(We also have B/Mitzvah invitations!)

Sisterhood Needs You

Bingo kitchen helpers



Call
Shoshanna Staffone 301-663-4686
Carol Blum 301-662-5021

**Sponsors for Onegs
 and Luncheons**





HELP THOSE IN NEED CELEBRATE THE HOLIDAYS



Each holiday season, National Council of Jewish Women (NCJW) Frederick Section "adopts" folks and reaches out to the community to purchase gifts so everyone can have a joyful holiday season

This year we are adopting a Jewish family (a.k.a. the Dreidels) and 3 non-Jewish senior citizens (a.k.a. the Senior Snowflakes)

The Dreidel family lives in Baltimore and has 4 children. 

12 year old boy

Likes Legos, building toys, art supplies, sports, anything age appropriate

10 year old boy

Likes Legos, board games, cars, transformers, sports, anything age appropriate 

7 year old girl

Likes Barbie, anything "Princess" related, jewelry & craft kits, anything age appropriate

4 year old girl


Likes Barbie, anything "Princess" related, jewelry & craft kits, anything age appropriate 


The Senior Snowflakes have requested

Arthur C (in his 70's)

Edith H (in her 80's)

Okhi C. (she is 80)

Adult shirt size: 
Favorite colors: Dark
Interests/Wish List Items:
Twin-size sheets, soaps, lotions, razors, mouth wash, stamps, pins, candy, sweat pants/sweatshirts.
He also likes to write cards.

Adult shirt size: XL
Waist size: XL 
Shoe Size: 9
Favorite colors: Dark
Interests/Wish List Items:
Sweaters, grocery gift card, Sweatpants, socks, soaps, Shampoo, deodorant, queen-size sheets

Adult shirt size: M
Interests/Wish List Items
soaps, lotions, socks, hand towels & washcloths, medium undershirts (white), candy, cordless phone, hand towels for kitchen, hair products

In order to distribute the gifts fairly and reduce duplication, we will have "snowflakes" and "dreidels" each requested gift written on it. The "snowflakes" and "dreidels" will be available in the Community lobby starting on October 23. Please take as many as you want, but PLEASE make sure to pick up those items.



If you can't make it to the Community Center to pick up a snowflake or dreidel, please call Community Center and one can be reserved for you.

Bins will be available in the Community Center Lobby to drop your gifts beginning on Oct 23.

The deadline to bring your gifts is 10AM ON DEC 4. 



If you would prefer to make a donation (and we will buy gifts), make checks payable and mail to Irene Stephen, 6956 North Clifton Road, Frederick MD 21702
Please indicate if you would like the money to go to Dreidels or one of the Senior Snowflakes.
For questions, call Diane at 301-831-8880 or Margie at 301-696-8679.

Yahrzeits
CHESHVAN/KISLEV 5772
NOVEMBER 2011



October 28*

Judy Blumenthal
 Alice Brunner
 Diane Chado
 Louis Davis

Julian Goldstein
 David Abelow
 Nathan Jacobson

November 4*

Tina Hasson
 Jesse Vogel
 Samuel Levine
 Nat Winters
 Mark Avissar
 Ann Chertoff
 Shirley Zink

Celia Glick
 Alan Hillman
 Nathaniel Blum
 Samuel Blum
 Samuel Elkin
 Jesse Stern

November 11*

Eugenia Brunner
 Marlin Cohen
 Pauline Glazer
 Abraham Halle
 Samuel Hasson
 Manuel Marcus
 Anne Bondy
 Paul S. Cantor
 Rebecca Pargament

Doris Honigman
 Julius Joseph
 Earl Hornstein
 Oskar Horowitz
 Herman Stern
 Harvey Botkin
 Murray Carver
 Anthony Trojecki

November 18*

John B. Cramer
 Sol Frederick
 Betty Gross
 David Hayman
 Ida Wolberg
 Joseph Lewin

Sol Pincus
 Nathan Lesser
 Florence Parman
 Jack Dorris
 Sylvia Goetzl

November 25*

Morris Linzner
 Charles Siegel
 Dora Silvard
 Lillian Chertoff
 Robert Routier

Rebecca Linzner
 Harry Nathanson
 Solomon Simon
 Lottie Brotman
 Gladys Jacobson

DONATIONS



Beth Sholom gratefully acknowledges the following donations:

Building Fund

Michelle and Sidney Kandel for the Yahrzeit of
 Frances Selzer
 Regina Kaiktsian in memory of Florence Guss
 Sylvia Sclar for the Yahrzeit of Frances Selzer

General Fund

Barry and Cindi Diamondtone for High Holiday honors
 Phyllis and Gary Schwartz for the Yahrzeit of
 Dr. Jesse Vogel
 Barbara Fromer for the Yahrzeit of Phil Fromer
 Linda and David Levine
 Sandy and Albert Dorfman for the Yahrzeit of
 Blanche Nickel Dorfman
 Maurice Guss for the Yahrzeits of Tina and Sam Hasson
 Daniel Blank for the Yahrzeit of Rebecca Pargament
 Margie and Bobby Cantor for the Yahrzeit of
 Paul S. Cantor
 Annette and Bruce Blum for the Yahrzeit of
 Nathaniel Blum
 Selma Blum for the Yahrzeit of Samuel Blum
 Ida Davis Ruck for the Yahrzeit of Louis Davis
 Abby Zink Roane for the Yahrzeit of Shirley Zink
 Susan and Boyd Dwyer in honor of the Potash wedding
 Susan and Boyd Dwyer in honor of the birth of
 Hannah Wetrogan
 Susan and Boyd Dwyer in honor of Rebecca House's
 special birthday
 Cindi and Barry Diamondstone in honor of
 Andy Rosenfeld's Bar Mitzvah
 Sylvia and Richard Haber in honor of Sharon Edelstein's
 "big" birthday
 Barbara Fromer in memory of Alan Hillman

Torah Fund

Martha and Martin Zweig for High Holiday honors
 Myra and Glenn Treiber in memory of Louis Halpern
 Goldie and Bill Lechter in memory of David Blatt,
 Ida Blatt and Beryl Blatt ☆

* indicates Friday on which name will be read from the Bima



OLD FARM LIQUORS

2190 Old Farm Drive • Frederick, Maryland 21702

Open 7 Days a Week



oldfarmliquors@gmail.com
www.oldfarmliquors.com

Rashad Kronfli
301-663-5233



Harvey Levy, D.M.D., M.A.G.D.
David M. Somerville, D.D.S., F.A.G.D.
Niraj D. Patel, D.M.D., F.A.G.D.
Sunanda Bhushan, D.M.D.

198 Thomas Johnson Dr., Suite 108
Frederick, Maryland 21702
(301) 663-8300 (Voice or TDD)
www.DrHLevyAssoc.com
DrHLevy@gmail.com

DENTISTRY FOR CHILDREN AND ADULTS

Including Sedation In The Office,
And Dentistry While You Sleep At Frederick Memorial Hospital



DOWNTOWN PIANO WORKS

SALES • SERVICE • SCHOOL

74 South Market Street
Frederick, MD 21701
(301) 631-1234

www.downtownpianoworks.com



Speaking of death...
no one does because
it can be difficult.

Since late 2000, we have been holding the hands of individuals like yourself and helping them to prepare for the unspeakable. Our trained counselors are here to ease your situation, whether it's pre-planning or the sudden loss of a loved one. We will advise you on burial methods and locations, costs and payment plans, funeral practices and traditions, and memorial choices.

We are skilled in the sacred rituals of all branches of the Jewish faith, and have experienced counselors here to assist you. Individual and family sites are available, and to date, 21 congregations have reserved sections for their congregants.

To schedule an appointment, contact our Help Line today at 301.428.3000, or visit www.gardenofremembrance.org.



11 Years of Caring Service, Eternal Peace and Beauty

East Street Beads

Beads, Crystals, Czech Glass, Tools, Wire and Much More!
www.eaststreetbeads.com



info@eaststreetbeads.com
922 N. East Street • Frederick • MD 21701
301-624-2323 (BEAD)

DAWN CRAMER STEIN

Certified Public Accountant



America Counts on CPAs®

922 N. East Street
Frederick, MD 21701-4618
dawn@dsteincpa.com

Tel: 301-663-8368
Fax: 301-663-6786
Cell: 301-964-3326



David J. Levine, D.P.M., C. Ped.
Podiatrist & Pedorthist
www.Levinefeet.com

301-696-0818
Fax 301-696-8872

63 Thomas Johnson Drive
Suite C
Frederick, MD 21702

PODIATRY • FOOT SURGERY • SPORTS MEDICINE

Beth Sholom Congregation would like to thank each of the sponsors and donors that helped make our First Annual Casino Night a success

Licensed in Maryland 

McLEAN
MORTGAGE CORPORATION

Lending as it should be.

Licensed by:
Virginia State Corporation Commission
License number MC-5215



★★★★★

Real Estate Teams
LLC

J.B. Powell, REALTOR®

EYE TO EYE 

Personal Attention Only a Private Doctor Can Give

**Morgan Stanley
Smith Barney**

**ATLANTIC
BINGO SUPPLY**

FRANK MORAN & SONS, INC.
SPECIALISTS IN BINGO SUPPLIES & EQUIPMENT, BREAK OPEN TICKETS,
FUND RAISING ITEMS, VEGAS NIGHT, AND EQUIPMENT RENTALS

**SMOOTH SKIN
CENTER**
(301) 785-2989

Susan and Boyd Dwyer

Dr. and Mrs. Leonard Kinland

- Adventure Park, USA
 - Baltimore Ravens
 - Beads and Crystals
 - Big Screen Store
 - Brewer's Alley
 - Canaan Valley Ski Resort
 - China Garden
 - Colonial Jewelers
 - Costco
 - Donna Henson—Lia Sophia
 - Double T Diner
 - Dr. Lawrence Costello
 - Ezra and Marla Elkon
 - Frederick School of Beauty
 - Golden Corral
- Glory Days Grill
 - Howard and Jamie Wetrogan
 - Hene Liszka
 - Just Kids Stuff
 - Loew Vineyard
 - Mangi E Bevi Restaurant
 - McGuire Fine Arts and Framing
 - Montgomery Golf
 - Moxie's Bakery and Cafe
 - Musket Ridge Golf Club
 - Ninengers
 - Olives
 - Paradise of Fun
 - Samuel and Sons Seafood
 - Save Around
- Shadowland
 - Shockley Honda
 - Shoresh
 - Ski Liberty
 - Ski Roundtop
 - Ski Whitetail
 - Soft Images Salon
 - The Muse
 - Uncle Ralph's Cookies
 - Verizon
 - Washington Capitals
 - Washington Nationals
 - Washington Redskins
 - WUSA Channel 9

Please Support our generous Sponsors and Donors



PROUDLY PRESENTS THE AREA'S COOLEST MC'S



BRIAN

NICK

CARLOS

RYAN

BLAKE

EXPECT THE BEST



301.370.1125

410.878.2804

What makes our MC's *different*? The answer is simple: a refreshingly dynamic personality that provides every single family with a non-stop, energy packed party they can't find anywhere else.

What makes our MC's *better*? The answer is just a phone call away.

WWW.ELECTRICDJ.COM



Office Hours By Appointment

**NEWMAN FAMILY CHIROPRACTIC
DR. IAN NEWMAN**

198 Thomas Johnson Dr., #12
Frederick, Maryland 21702
(301) 696-8888, Fax: (301) 696-9618
1190 Mount Aetna Road
Hagerstown, MD 21740
(301) 791-5900

MJ Minton
ASSOCIATE BROKER, ECOBROKER®



TURNING POINT
REAL ESTATE

*Residential and Commercial
Sales and Rentals*

Special Training in Energy Efficiency
Affecting Today's Real Estate Transaction



CELL 240.674.3374
OFFICE 301.831.8232
www.mjminton.net



**SUNSHINE MANAGEMENT
CORPORATION**

Nelson S. Zahler

President
Broker

Phone: (301) 663-8383 ext: 202
Toll Free: 1-800-663-4990
Fax: (301) 663-0070
nelsonz@sunshinemanagement.net

Ambers Professional Center
178 Thomas Johnson Drive, Ste. 201
Frederick, MD 21702-4334
www.sunshinemanagement.net



Mark S. Hoffrichter, D.D.S.
Oral & Maxillofacial Surgery

Mark S. Hoffrichter, DDS

Centerpark Medical Center

604 Solarex Court, Suite 207
Frederick, MD 21703
301 695-5755

www.HoffrichterDDS.com



Adam J. Frieder, DDS, LLC

Family and Cosmetic Dentistry

401 W. Seventh Street • Frederick, MD 21701
Tel: 301.662.7766 • Fax: 301.662.7776
www.friederdental.com
dfrieder@yahoo.com



OUR FRAMES
Your style

OAKLEY • VERSACE • COACH

Dr. Beverly Chado &
Dr. Steven Chado Optometrists

EYE TO EYE

Personal Attention Only a Private Doctor Can Give
EYE EXAMS • CONTACTS • LAB ON PREMISES

2060 Yellow Springs Rd. Across from Ft. Detrick Old Farm Gate
301.695.8771 • www.eyetoeyedr.com

Introducing...
walkright



Walkright is a shoe store specializing
in making your feet comfortable.
We measure, listen, and help you find
what you want for your feet.

2010 West 7th Street, Frederick, MD 21701 • Phone 301-631-1950 • Fax 301-631-1970

November 2011

4 Cheshvan 5772 - 4 Kislev 5772

Sunday	Monday	Tuesday	Wednesday	Thursday	Friday	Saturday
		1 4 CHESHVAN 7:30p Adult Ed with Rabbi T.	2 5 CHESHVAN	3 6 CHESHVAN 8a Minyar 11a Senior Brunch Bunch 4:30p Religious Scho	4 7 CHESHVAN 5:46 6:30p Service Nursery School clos	5 8 CHESHVAN Lech Lech: 9:30a Service
6 9 CHESHVAN 10a Religious Scho 12:30 Rel. Sch. Enrichment Progra N-Trope clas 11a-φ Jewish Foo Festival 5p Bingo (Bonanz	7 10 CHESHVAN 5p Shoresh bin	8 11 CHESHVAN 7:30p Adult Ed with Rabbi T.	9 12 CHESHVAN 6:30p Executive Committee meetir 7p Sisterhood meetir	10 13 CHESHVAN 8a Minyar 11a Senior Brunch Bunch 4:30p Religious Scho	11 14 CHESHVAN 4:39 6:30p Service	12 15 CHESHVAN Vayer: 9:30a Service 4:30p Bar Mitzvah of Ethan Smith
13 16 CHESHVAN 10a Religious Scho 12:30p Rel. Sch. Enrichment Progra N-Trope clas 2p Jewelry Making Workshop at East St Beads Bingo	14 17 CHESHVAN 5p Bingc	15 18 CHESHVAN 1p Knit and Nos 7:30p Adult Ed with Rabbi T.	16 19 CHESHVAN 7p Board of Trustee meeting	17 20 CHESHVAN 8a Minyar 4:30-φ Religious Scho	18 21 CHESHVAN 4:34 6p Tot Shabb: 6:30p Service	19 22 CHESHVAN Chaye Sara 9:30a Service 6p ECC PJ Havdalla Party
20 23 CHESHVAN 10a Religious Scho 12:30 Rel. Sch. Enrichment Progra N-Trope clas 1p Book Clut 5p Bingc	21 24 CHESHVAN 5p Shoresh Bin	22 25 CHESHVAN 7:30p Adult Ed with Rabbi T.	23 26 CHESHVAN Nursery School clos	24 27 CHESHVAN Thanksgiving Da Office Closes Nursery and Religiou School closed	25 28 CHESHVAN 4:30 6:30p Service Nursery School clos	26 29 CHESHVAN Toldot 9:30a Service Bar Mitzvah of Adarr Needle
27 1 KISLEV Rosh Chodesh Kislev Office closes Religious School clos 5p Bingc	28 2 KISLEV 5p Bingo (Bonanz	29 3 KISLEV 7:30p Adult Ed with Rabbi T.	30 4 KISLEV			